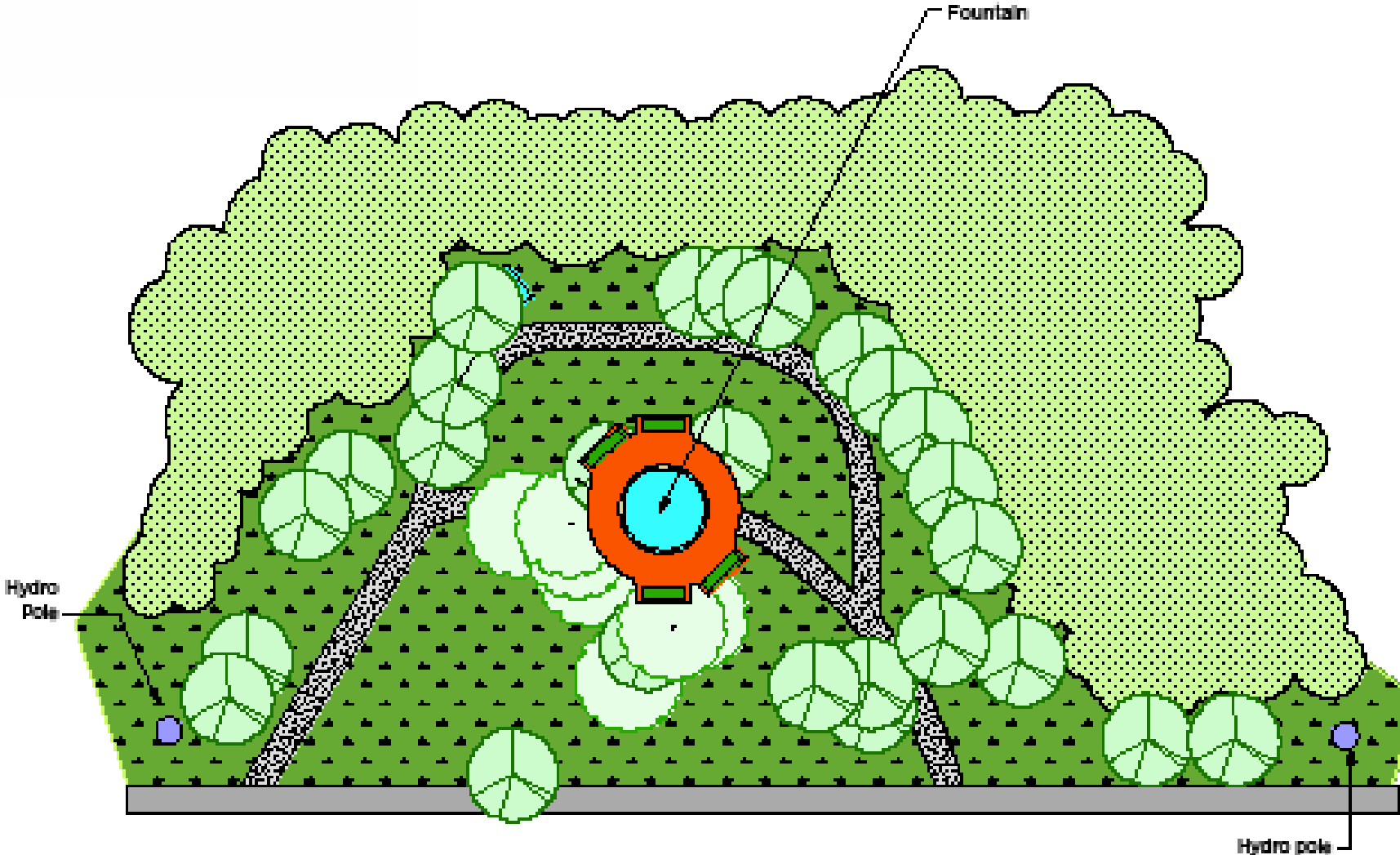


# Fireman's Memorial Fountain and Community Project Hantsport, Nova Scotia

Environova assessed the potential sites for the Fireman's Memorial Fountain and chose a location that would best accommodate all users including locals and potential tourists. As the fountain selection was prearranged it was Environova's responsibility to determine the best placement for the piece within the three sites. The site analysis determined the best location, benefits and challenges of the project and construction requirements to implement the fountain at each site. Visualizations were then built to illustrate the three different concepts.



Before



After